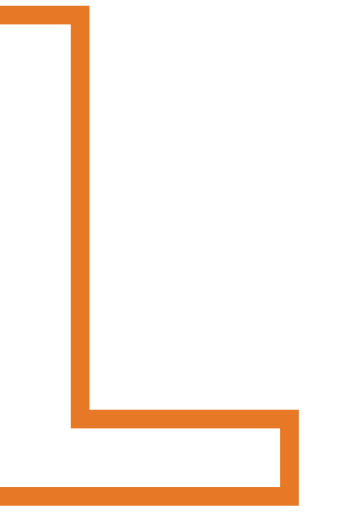




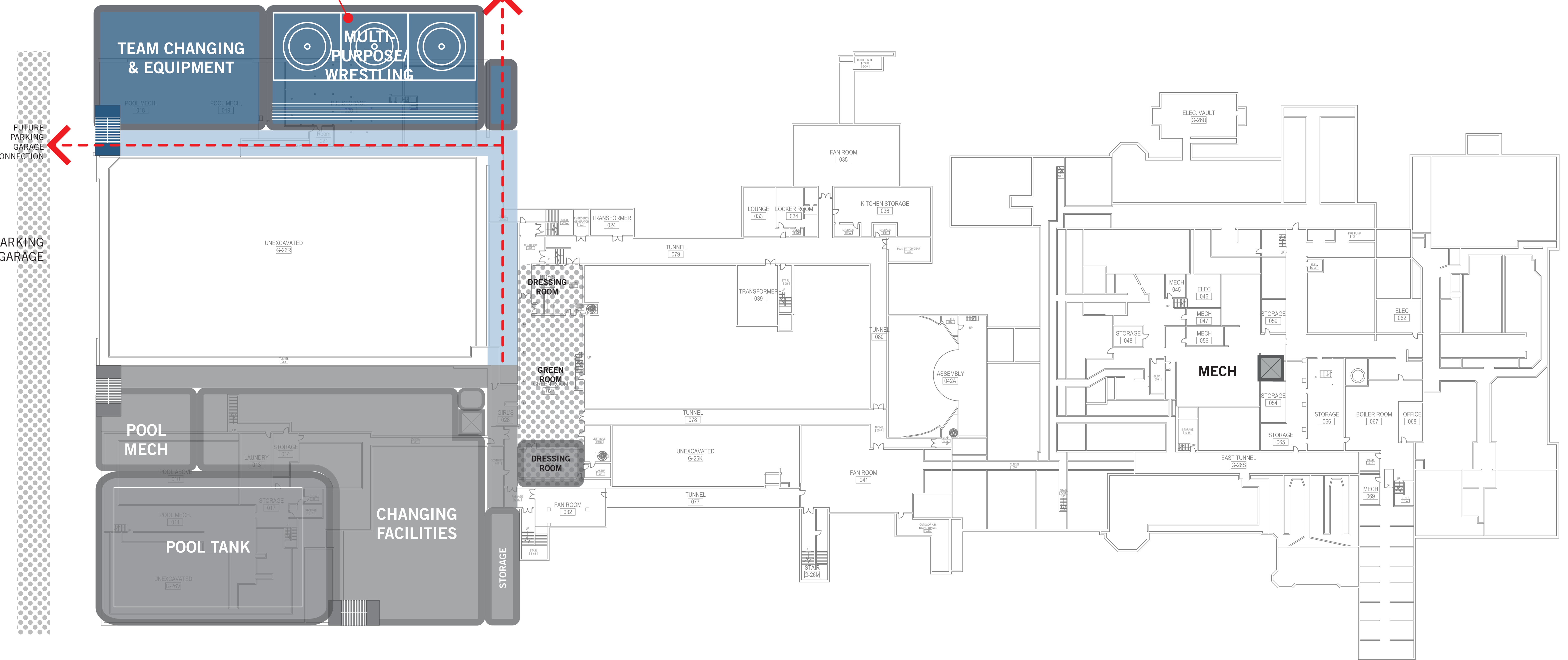
SEQUENCE 3

DRAFT
September 4, 2018



Single story program elements located near perimeter to provide access to natural light

POTENTIAL DIRECT CONNECTION TO WEST FIELDS

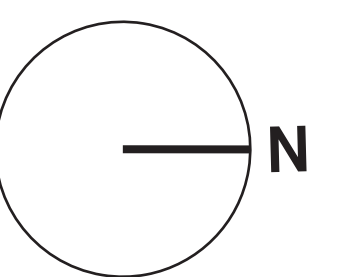


LEGEND

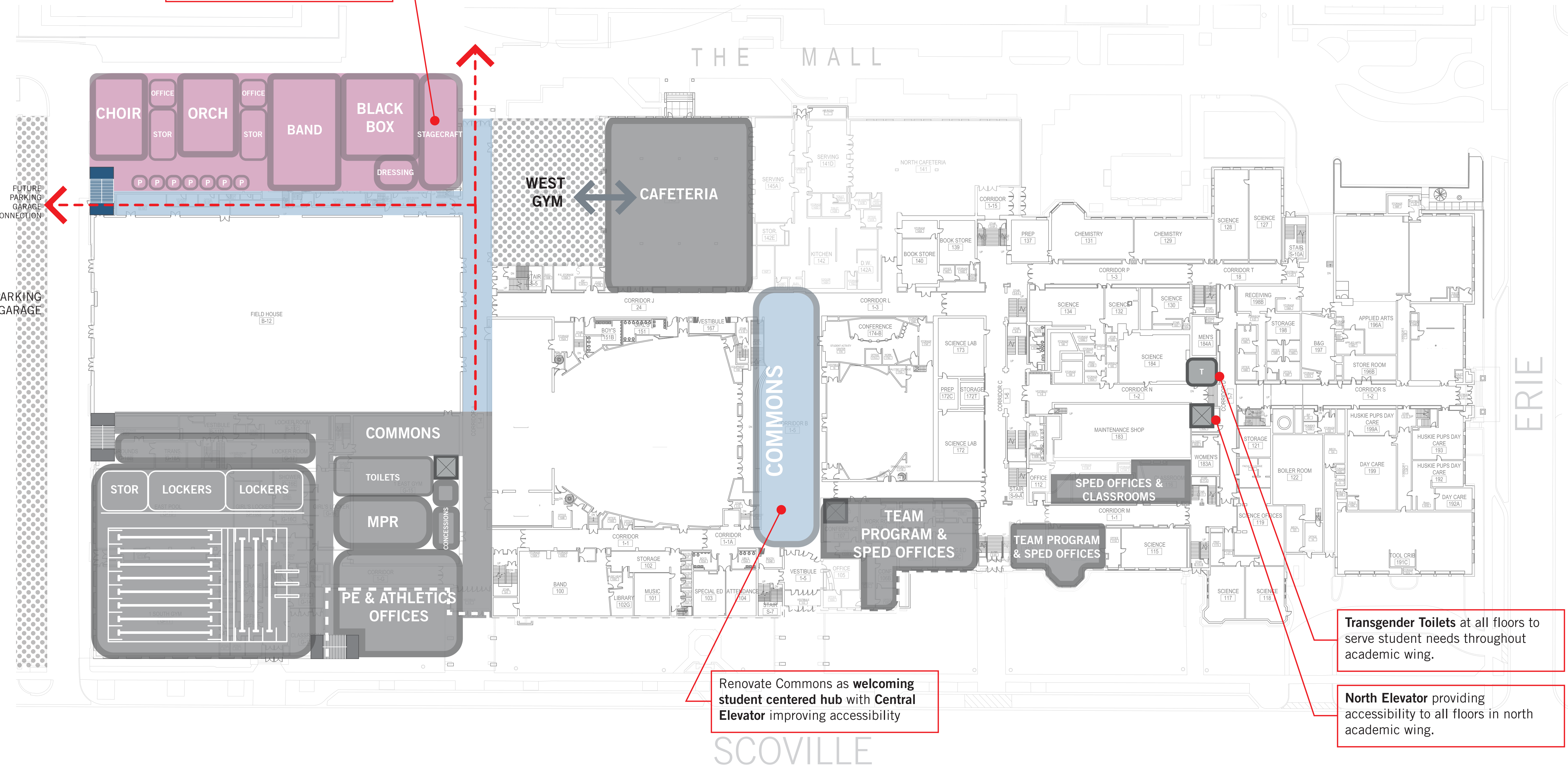
- | | | | |
|--|---------------------------|--|---------------------------------|
| | Art: Visual | | Special Education |
| | Art: Performing | | Library |
| | Applied Arts | | Physical Education |
| | English | | Administration |
| | Science | | Community/Shared Spaces |
| | General/Shared Classrooms | | Building Services |
| | Mathematics | | Dotted Hatch - Existing Program |
| | World Languages | | Solid Hatch - Proposed Program |
| | History | | |

ABBREVIATIONS & SYMBOLS

- | | |
|---------------|-----------------------|
| T | Toilet |
| CR | Classroom |
| COLLAB | Collaboration Space |
| MECH | Mechanical Room |
| PREP | Science Lab Prep Room |
| SM GR | Small Group |
| SPED | Special Education |
| STOR | Storage Room |
| | Elevator |



Expanded Performing Arts facilities provide **accessible, acoustically controlled spaces**

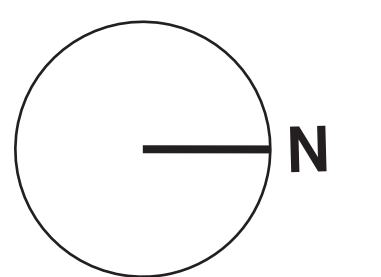


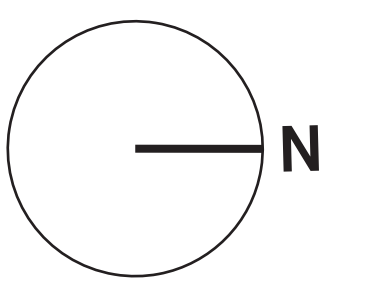
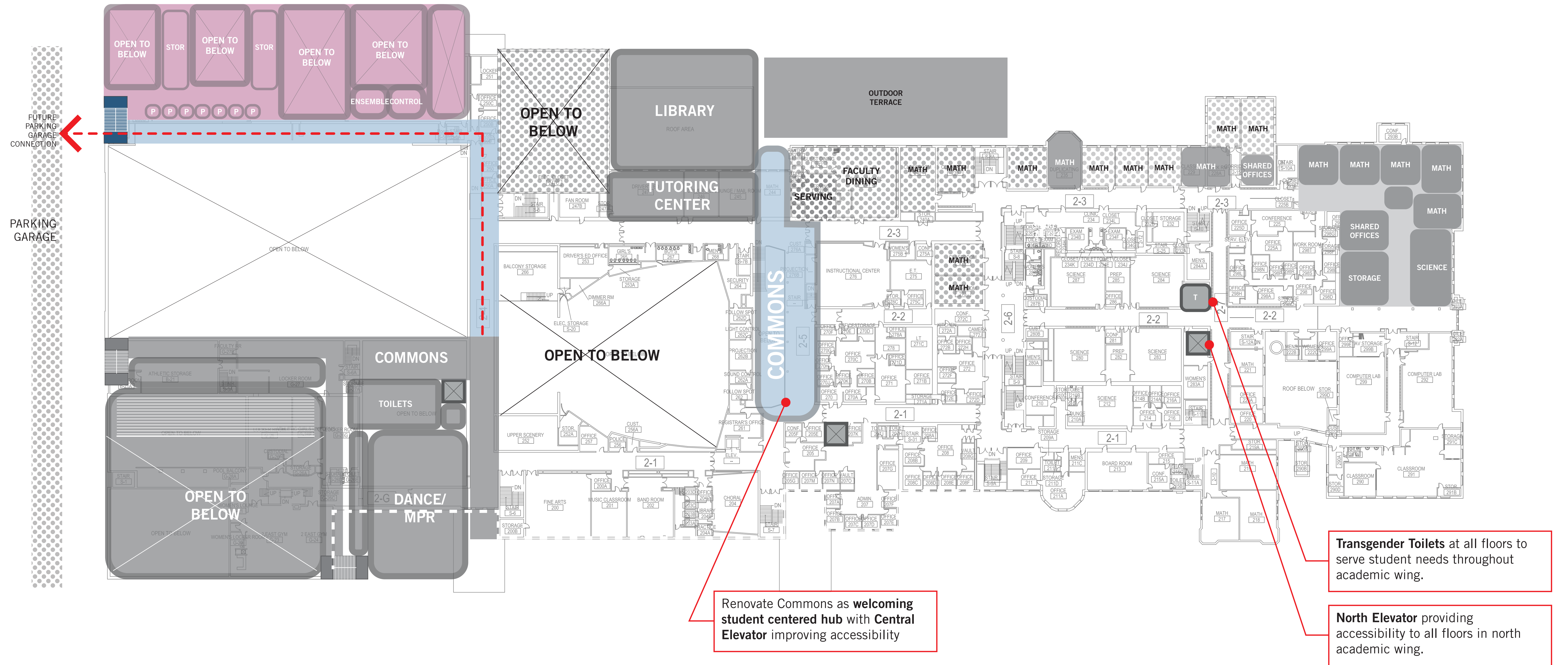
LEGEND

- | | |
|---|--|
| Art: Visual | Special Education |
| Art: Performing | Library |
| Applied Arts | Physical Education |
| English | Administration |
| Science | Community/Shared Spaces |
| General/Shared Classrooms | Building Services |
| Mathematics | Dotted Hatch - Existing Program |
| World Languages | Solid Hatch - Proposed Program |
| History | |

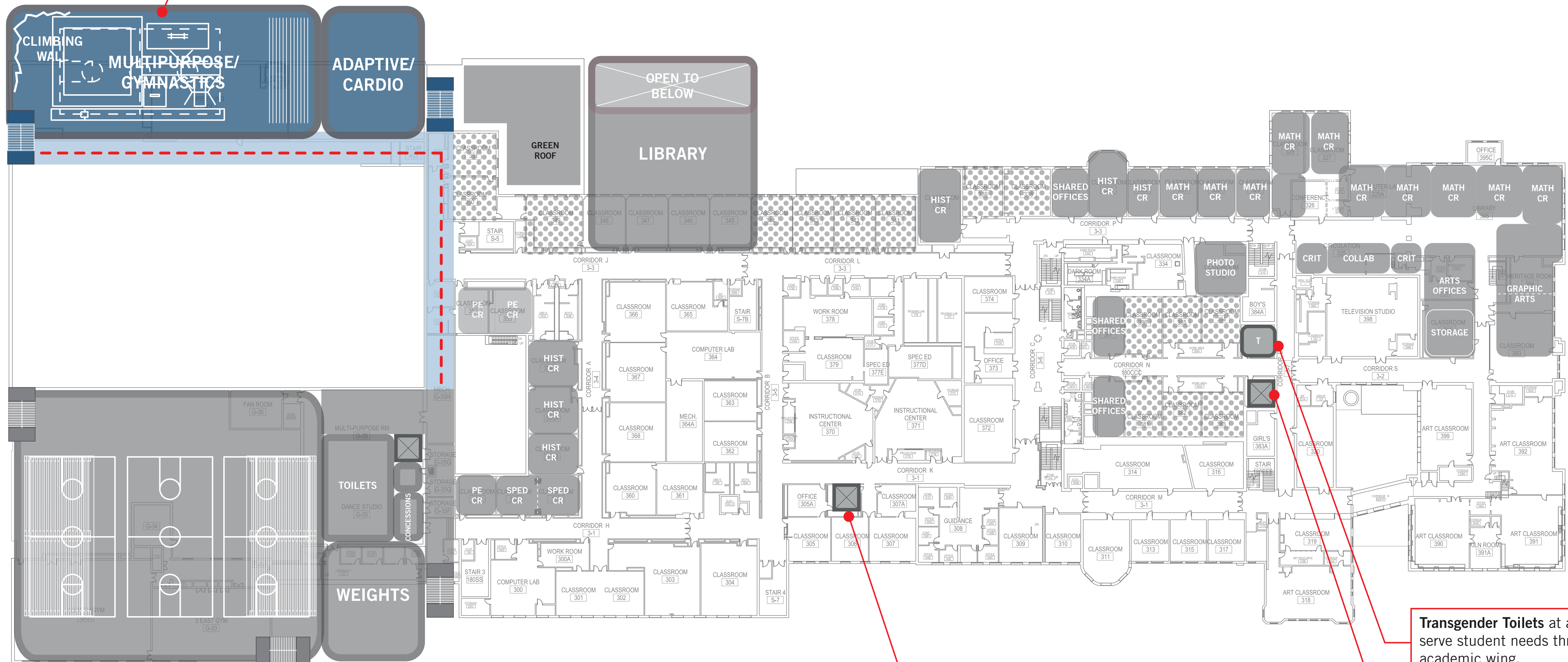
ABBREVIATIONS & SYMBOLS

- | | |
|---|-----------------------|
| T | Toilet |
| CR | Classroom |
| COLLAB | Collaboration Space |
| MECH | Mechanical Room |
| PREP | Science Lab Prep Room |
| SM GR | Small Group |
| SPED | Special Education |
| STOR | Storage Room |
| | Elevator |





Gymnastics Gym sized and structured to allow for expansion into future 200M Fieldhouse.



Central Elevator extends to 3rd floor providing improved accessibility to all floors

Transgender Toilets at all floors to serve student needs throughout academic wing.

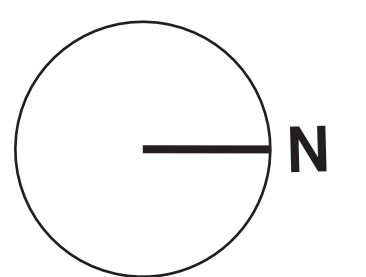
North Elevator providing improved accessibility to all floors in north academic wing.

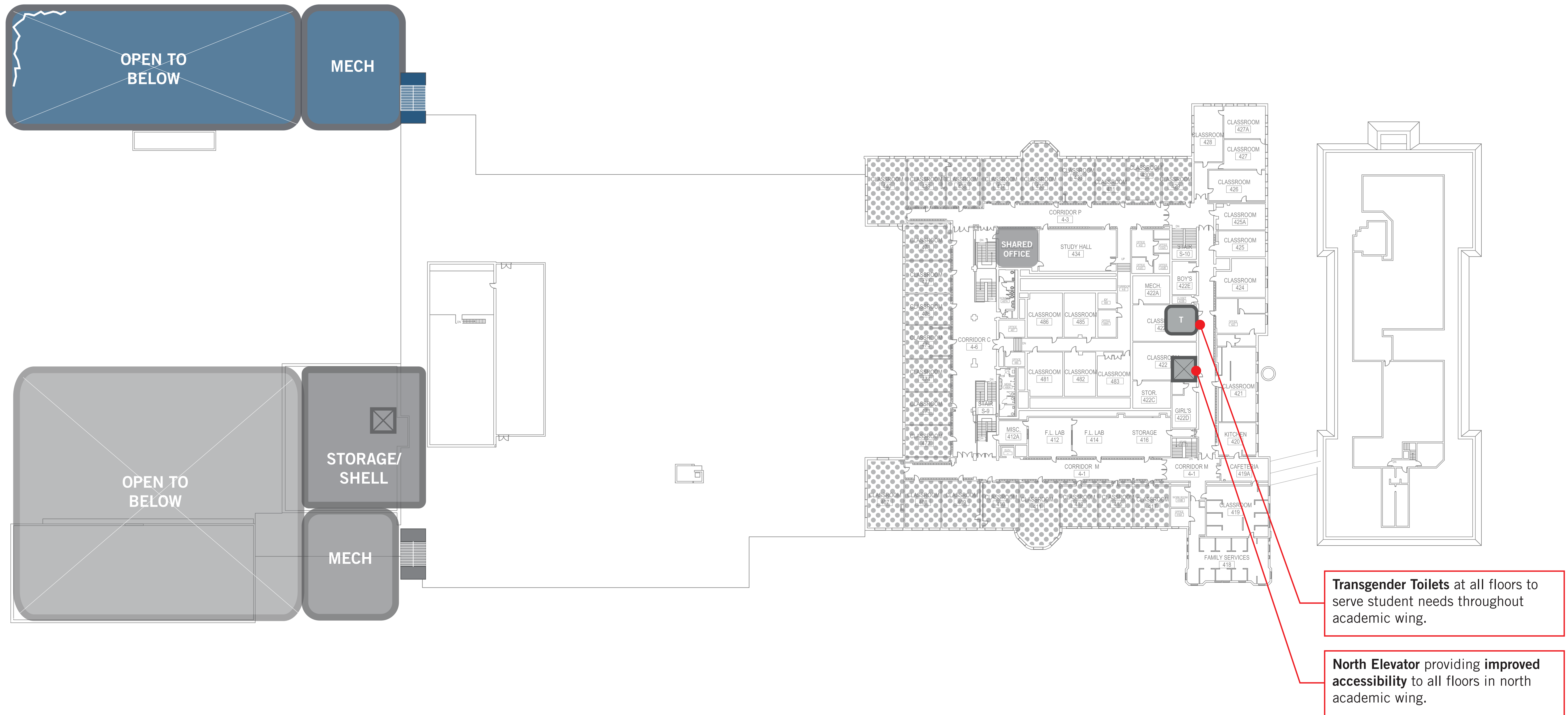
LEGEND

- | | |
|---------------------------|---------------------------------|
| Art: Visual | Special Education |
| Art: Performing | Library |
| Applied Arts | Physical Education |
| English | Administration |
| Science | Community/Shared Spaces |
| General/Shared Classrooms | Building Services |
| Mathematics | Dotted Hatch - Existing Program |
| World Languages | Solid Hatch - Proposed Program |
| History | |

ABBREVIATIONS & SYMBOLS

- | | |
|---------------|-----------------------|
| T | Toilet |
| CR | Classroom |
| COLLAB | Collaboration Space |
| MECH | Mechanical Room |
| PREP | Science Lab Prep Room |
| SM GR | Small Group |
| SPED | Special Education |
| STOR | Storage Room |
| | Elevator |





LEGEND

- | | |
|---------------------------|---------------------------------|
| Art: Visual | Special Education |
| Art: Performing | Library |
| Applied Arts | Physical Education |
| English | Administration |
| Science | Community/Shared Spaces |
| General/Shared Classrooms | Building Services |
| Mathematics | Dotted Hatch - Existing Program |
| World Languages | Solid Hatch - Proposed Program |
| History | |

ABBREVIATIONS & SYMBOLS

- | | |
|---------------|-----------------------|
| T | Toilet |
| CR | Classroom |
| COLLAB | Collaboration Space |
| MECH | Mechanical Room |
| PREP | Science Lab Prep Room |
| SM GR | Small Group |
| SPED | Special Education |
| STOR | Storage Room |
| | Elevator |

